



Safety Options for Reno Road NW

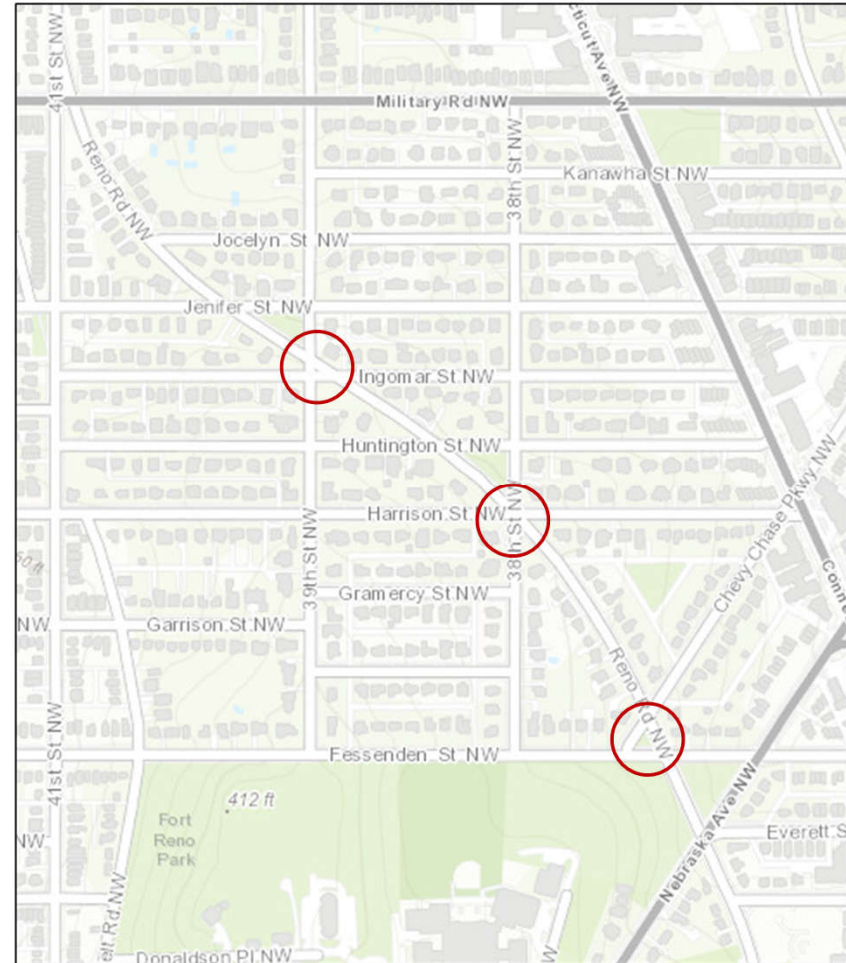


September 19, 2016

Agenda

Proposed safety improvements at the intersections of:

- Reno Road, 39th Street, and Ingomar Street NW
- Reno Road, Chevy Chase Parkway, and Fessenden Street NW
- Reno Road, 38th Street, and Harrison Street NW



Reno/39th/Ingomar

- Existing Concerns
 - Limited sight distance for vehicles on southbound 39th Street at Reno Road NW due to street trees and landscaping
 - Closely spaced intersections lead to multiple conflict points
 - Difficult for pedestrians to cross Reno Road NW
- Additional concern raised over intersection control and crash rate at adjacent intersection of 39th and Jenifer Streets NW

Reno/39th/Ingomar



Reno/39th/Ingomar

- Proposed Improvements
 - Convert 39th Street NW to one-way northbound between Reno Road and Jenifer Street NW
 - Convert Ingomar Street NW to one-way eastbound between 39th Street and Reno Road NW
 - Convert intersection of 39th Street and Jenifer Street NW to all-way stop
 - Remove parking on north side of Jenifer Street between Reno Road and 39th Street NW
 - Additional signing and marking improvements, including high-visibility crosswalks


Reno/39th/Ingomar




Reno/39th/Ingomar

- DDOT proposed improvements


-  Removes site distance concern for southbound 39th Street NW

-  Reduces conflict points for vehicles and pedestrians


-  Reduces circulation options at intersection

-  Requires removal of one street tree on southwest corner to improve site distance on northbound 39th Street NW

- What if we convert 39th Street and Reno Road NW to all-way stop?

-  Controls all approaches

-  All-way stop control does not meet warrants and could result in low driver compliance

-  Requires removal of one street tree on southwest corner to improve site distance for northbound 39th Street NW and removal of one street tree on northeast corner to improve site distance for southbound 39th Street NW

Reno/Chevy Chase/Fessenden

- Existing Concerns
 - Limited sight distance for vehicles on southbound 39th Street at Reno Road
 - Closely spaced intersections lead to multiple conflict points
 - Vehicles block the intersection due to southeast-bound queue at adjacent intersection of Reno Road and Nebraska Avenue NW
 - Difficult for pedestrians to cross Reno Road NW

Reno/Chevy Chase/Fessenden



Reno/Chevy Chase/Fessenden

- Short-Term
 - Convert Chevy Chase Parkway NW to one-way southbound between Reno Road and Fessenden Street NW
 - Additional signing and marking improvements, including high-visibility crosswalks, painted median on southeast-bound Reno Road NW, and painted parking boxes on west side of Reno Road NW
- Long-Term
 - Investigate installation of Rectangular Rapid Flashing Beacon (RRFB) on northern crosswalk
 - Installation of RRFB would require removal of southern crosswalk
 - Convert Chevy Chase Parkway NB to one-way northbound between Reno Road and Connecticut Avenue/Harrison Street NW

Reno/Chevy Chase/Fessenden



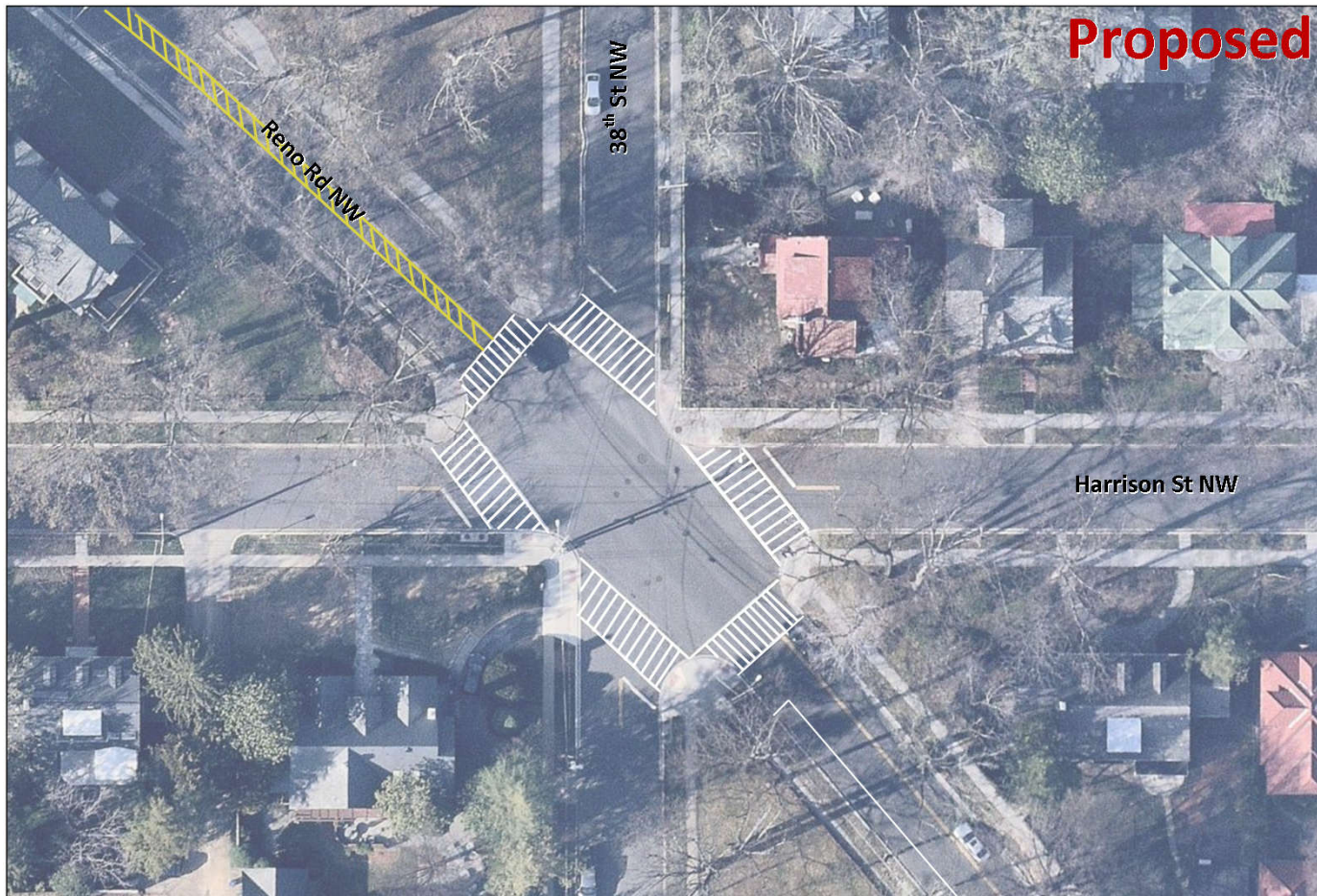
Reno/38th/Harrison

- Existing Concerns
 - Drivers speeding on Reno Road NW
- Short-term improvements
 - Signing and marking improvements, including high-visibility crosswalks, painted median on Reno Road NW north of Harrison Street NW, painted parking boxes on west side of Reno Road NW south of Harrison Street NW

Reno/38th/Harrison



Reno/38th/Harrison



Overall Next Steps

- Short-term improvements such as signing and marking can be implemented in next 30 days
- Notices of Intent (NOIs) need to be issued for any changes to parking or traffic operations
- NOIs open up 30-day comment period, comments must be resolved before proceeding
- Long-term recommendations at Reno/Chevy Chase/Fessenden will require further coordination with residents and evaluation of RRFB warrant

Questions?



For further information, contact:

Leon Anderson

leon.anderson@dc.gov

Emily Dalphy

emily.dalphy@dc.gov