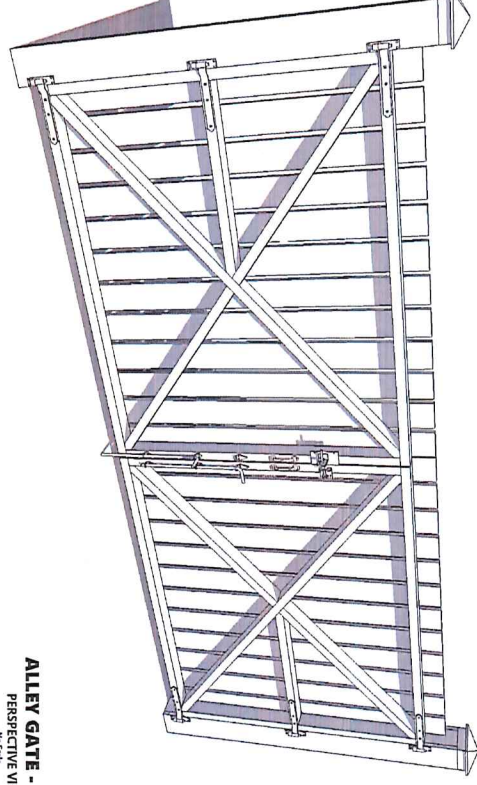
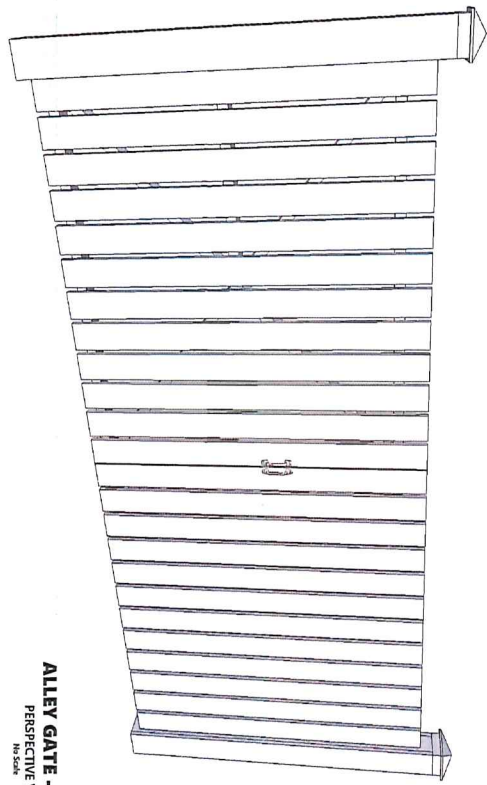


5500 TO 5514 CONNECTICUT AVE NW WASHINGTON DC 20015

ALLEY DOUBLE GATE AT 5500 TO 5514 CONNECTICUT AVE NW, WASHINGTON DC 20015

ELEVATION



SCOPE OF WORK

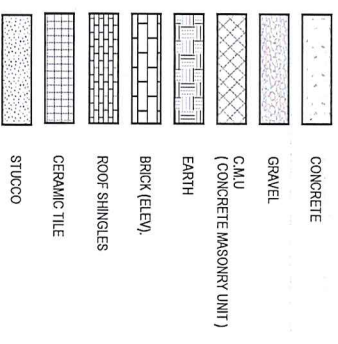
* CONSTRUCTION AND INSTALLATION OF A NEW ALLEY SWINGING DOUBLE DOOR.

PROJECT DATA

- 1. OWNER: HATCHER PROPERTY MANAGEMENT LLC
- 2. ADDRESS: 5500 TO 5514 CONNECTICUT AVE NW, WASHINGTON DC 20015
- 3. LOT: 5500 TO 5514
- 4. SMD: SMD 33905
- 5. WARD: 3
- 6. CODES: 2015 IRC
- 7. OCCUPANCY:
- 8. LEGAL DESCRIPTION: 1859
- 9. SQUARE:
- 10. MAP:
- 11. REAL PROPERTY ID (SSL):

NOTES

SYMBOLS



LEGEND

AA001	ALLEY FRONT FLOOR	AA002	ALLEY FRONT FLOOR
AA002	ALLEY FRONT FLOOR	AA003	ALLEY FRONT FLOOR
AA003	ALLEY FRONT FLOOR	AA004	ALLEY FRONT FLOOR
AA004	ALLEY FRONT FLOOR	AA005	ALLEY FRONT FLOOR
AA005	ALLEY FRONT FLOOR	AA006	ALLEY FRONT FLOOR
AA006	ALLEY FRONT FLOOR	AA007	ALLEY FRONT FLOOR
AA007	ALLEY FRONT FLOOR	AA008	ALLEY FRONT FLOOR
AA008	ALLEY FRONT FLOOR	AA009	ALLEY FRONT FLOOR
AA009	ALLEY FRONT FLOOR	AA010	ALLEY FRONT FLOOR
AA010	ALLEY FRONT FLOOR	AA011	ALLEY FRONT FLOOR
AA011	ALLEY FRONT FLOOR	AA012	ALLEY FRONT FLOOR
AA012	ALLEY FRONT FLOOR	AA013	ALLEY FRONT FLOOR
AA013	ALLEY FRONT FLOOR	AA014	ALLEY FRONT FLOOR
AA014	ALLEY FRONT FLOOR	AA015	ALLEY FRONT FLOOR
AA015	ALLEY FRONT FLOOR	AA016	ALLEY FRONT FLOOR
AA016	ALLEY FRONT FLOOR	AA017	ALLEY FRONT FLOOR
AA017	ALLEY FRONT FLOOR	AA018	ALLEY FRONT FLOOR
AA018	ALLEY FRONT FLOOR	AA019	ALLEY FRONT FLOOR
AA019	ALLEY FRONT FLOOR	AA020	ALLEY FRONT FLOOR
AA020	ALLEY FRONT FLOOR	AA021	ALLEY FRONT FLOOR
AA021	ALLEY FRONT FLOOR	AA022	ALLEY FRONT FLOOR
AA022	ALLEY FRONT FLOOR	AA023	ALLEY FRONT FLOOR
AA023	ALLEY FRONT FLOOR	AA024	ALLEY FRONT FLOOR
AA024	ALLEY FRONT FLOOR	AA025	ALLEY FRONT FLOOR
AA025	ALLEY FRONT FLOOR	AA026	ALLEY FRONT FLOOR
AA026	ALLEY FRONT FLOOR	AA027	ALLEY FRONT FLOOR
AA027	ALLEY FRONT FLOOR	AA028	ALLEY FRONT FLOOR
AA028	ALLEY FRONT FLOOR	AA029	ALLEY FRONT FLOOR
AA029	ALLEY FRONT FLOOR	AA030	ALLEY FRONT FLOOR
AA030	ALLEY FRONT FLOOR	AA031	ALLEY FRONT FLOOR
AA031	ALLEY FRONT FLOOR	AA032	ALLEY FRONT FLOOR
AA032	ALLEY FRONT FLOOR	AA033	ALLEY FRONT FLOOR
AA033	ALLEY FRONT FLOOR	AA034	ALLEY FRONT FLOOR
AA034	ALLEY FRONT FLOOR	AA035	ALLEY FRONT FLOOR
AA035	ALLEY FRONT FLOOR	AA036	ALLEY FRONT FLOOR
AA036	ALLEY FRONT FLOOR	AA037	ALLEY FRONT FLOOR
AA037	ALLEY FRONT FLOOR	AA038	ALLEY FRONT FLOOR
AA038	ALLEY FRONT FLOOR	AA039	ALLEY FRONT FLOOR
AA039	ALLEY FRONT FLOOR	AA040	ALLEY FRONT FLOOR
AA040	ALLEY FRONT FLOOR	AA041	ALLEY FRONT FLOOR
AA041	ALLEY FRONT FLOOR	AA042	ALLEY FRONT FLOOR
AA042	ALLEY FRONT FLOOR	AA043	ALLEY FRONT FLOOR
AA043	ALLEY FRONT FLOOR	AA044	ALLEY FRONT FLOOR
AA044	ALLEY FRONT FLOOR	AA045	ALLEY FRONT FLOOR
AA045	ALLEY FRONT FLOOR	AA046	ALLEY FRONT FLOOR
AA046	ALLEY FRONT FLOOR	AA047	ALLEY FRONT FLOOR
AA047	ALLEY FRONT FLOOR	AA048	ALLEY FRONT FLOOR
AA048	ALLEY FRONT FLOOR	AA049	ALLEY FRONT FLOOR
AA049	ALLEY FRONT FLOOR	AA050	ALLEY FRONT FLOOR
AA050	ALLEY FRONT FLOOR	AA051	ALLEY FRONT FLOOR
AA051	ALLEY FRONT FLOOR	AA052	ALLEY FRONT FLOOR
AA052	ALLEY FRONT FLOOR	AA053	ALLEY FRONT FLOOR
AA053	ALLEY FRONT FLOOR	AA054	ALLEY FRONT FLOOR
AA054	ALLEY FRONT FLOOR	AA055	ALLEY FRONT FLOOR
AA055	ALLEY FRONT FLOOR	AA056	ALLEY FRONT FLOOR
AA056	ALLEY FRONT FLOOR	AA057	ALLEY FRONT FLOOR
AA057	ALLEY FRONT FLOOR	AA058	ALLEY FRONT FLOOR
AA058	ALLEY FRONT FLOOR	AA059	ALLEY FRONT FLOOR
AA059	ALLEY FRONT FLOOR	AA060	ALLEY FRONT FLOOR
AA060	ALLEY FRONT FLOOR	AA061	ALLEY FRONT FLOOR
AA061	ALLEY FRONT FLOOR	AA062	ALLEY FRONT FLOOR
AA062	ALLEY FRONT FLOOR	AA063	ALLEY FRONT FLOOR
AA063	ALLEY FRONT FLOOR	AA064	ALLEY FRONT FLOOR
AA064	ALLEY FRONT FLOOR	AA065	ALLEY FRONT FLOOR
AA065	ALLEY FRONT FLOOR	AA066	ALLEY FRONT FLOOR
AA066	ALLEY FRONT FLOOR	AA067	ALLEY FRONT FLOOR
AA067	ALLEY FRONT FLOOR	AA068	ALLEY FRONT FLOOR
AA068	ALLEY FRONT FLOOR	AA069	ALLEY FRONT FLOOR
AA069	ALLEY FRONT FLOOR	AA070	ALLEY FRONT FLOOR
AA070	ALLEY FRONT FLOOR	AA071	ALLEY FRONT FLOOR
AA071	ALLEY FRONT FLOOR	AA072	ALLEY FRONT FLOOR
AA072	ALLEY FRONT FLOOR	AA073	ALLEY FRONT FLOOR
AA073	ALLEY FRONT FLOOR	AA074	ALLEY FRONT FLOOR
AA074	ALLEY FRONT FLOOR	AA075	ALLEY FRONT FLOOR
AA075	ALLEY FRONT FLOOR	AA076	ALLEY FRONT FLOOR
AA076	ALLEY FRONT FLOOR	AA077	ALLEY FRONT FLOOR
AA077	ALLEY FRONT FLOOR	AA078	ALLEY FRONT FLOOR
AA078	ALLEY FRONT FLOOR	AA079	ALLEY FRONT FLOOR
AA079	ALLEY FRONT FLOOR	AA080	ALLEY FRONT FLOOR
AA080	ALLEY FRONT FLOOR	AA081	ALLEY FRONT FLOOR
AA081	ALLEY FRONT FLOOR	AA082	ALLEY FRONT FLOOR
AA082	ALLEY FRONT FLOOR	AA083	ALLEY FRONT FLOOR
AA083	ALLEY FRONT FLOOR	AA084	ALLEY FRONT FLOOR
AA084	ALLEY FRONT FLOOR	AA085	ALLEY FRONT FLOOR
AA085	ALLEY FRONT FLOOR	AA086	ALLEY FRONT FLOOR
AA086	ALLEY FRONT FLOOR	AA087	ALLEY FRONT FLOOR
AA087	ALLEY FRONT FLOOR	AA088	ALLEY FRONT FLOOR
AA088	ALLEY FRONT FLOOR	AA089	ALLEY FRONT FLOOR
AA089	ALLEY FRONT FLOOR	AA090	ALLEY FRONT FLOOR
AA090	ALLEY FRONT FLOOR	AA091	ALLEY FRONT FLOOR
AA091	ALLEY FRONT FLOOR	AA092	ALLEY FRONT FLOOR
AA092	ALLEY FRONT FLOOR	AA093	ALLEY FRONT FLOOR
AA093	ALLEY FRONT FLOOR	AA094	ALLEY FRONT FLOOR
AA094	ALLEY FRONT FLOOR	AA095	ALLEY FRONT FLOOR
AA095	ALLEY FRONT FLOOR	AA096	ALLEY FRONT FLOOR
AA096	ALLEY FRONT FLOOR	AA097	ALLEY FRONT FLOOR
AA097	ALLEY FRONT FLOOR	AA098	ALLEY FRONT FLOOR
AA098	ALLEY FRONT FLOOR	AA099	ALLEY FRONT FLOOR
AA099	ALLEY FRONT FLOOR	AA100	ALLEY FRONT FLOOR

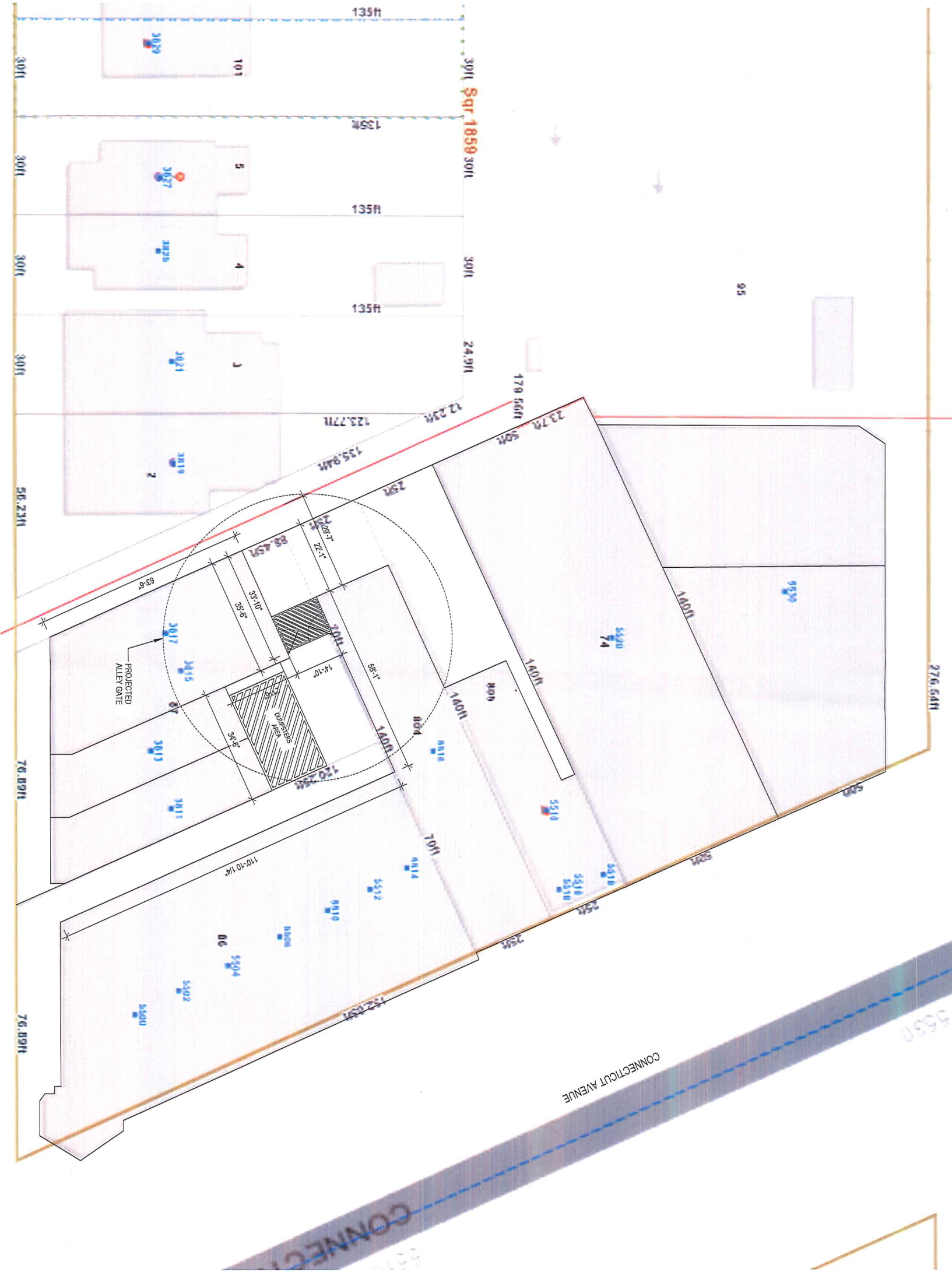
LIST OF DRAWINGS

1 of 3	COVER PAGE : INDEX, NOTES, SCOPE OF WORK AND PROP. INFO	C
2 of 3	SITE PLAN	A01
3 of 3	ALLEY DOUBLE GATE : DETAILS	A02



<p>BRANDES & CASSAGNOL ENGINEERS</p> <p>5520 CONNECTICUT AVE, NW #114 WASHINGTON, DC 20015</p>	<p>BRANDES & CASSAGNOL ENGINEERS</p> <p>PIERRE CASSAGNOL DC1 1410 888 5813 pccassag@bcfec.com</p>	<p>5500 CONNECTICUT AVE, NW #114 WASHINGTON, DC 20015</p>	<p>DATE: _____</p> <p>DESCRIPTION: _____</p>	<p>PROJECT LOCATION : 5500 TO 5514 CONNECTICUT AVE NW, WASHINGTON DC 20015</p> <p>CONTENT : INDEX, NOTES, SCOPE OF WORK & PROP. INFO.</p>	<p>OWNER : HATCHER PROPERTY MANAGEMENT</p> <p>5500 TO 5514 CONNECTICUT AVE NW WASHINGTON DC 20015</p> <p>DRAWN BY : RS</p> <p>DESIGNED BY : _____</p>
<p>PROJECT: ALLEY DOUBLE GATE</p> <p>5500 TO 5514 CONNECTICUT AVE NW, WASHINGTON DC 20015</p> <p>DATE : NOVEMBER 2022</p>	<p>SHEET 01 OF 04</p>				

5500 TO 5514 CONNECTICUT AVE NW WASHINGTON DC 20015



SITE PLAN - TOP VIEW

SCALE : 1 / 20" = 1' - 0" (1:240)

PRESENTED BY



5530 CONNECTICUT AVE. NW #LL4
WASHINGTON, DC 20015

BRANDES & CASSAGNOL ENGINEERS

PIERRE CASSAGNOL
BCE Structural Engineers
1410 32nd St
Washington, DC 20015
pcassagnol@brandes.com

5530 CONNECTICUT AVE. NW #LL4
WASHINGTON, DC 20015

DATE	DESCRIPTION

PROJECT LOCATION :
5500 TO 5514 CONNECTICUT AVE NW, WASHINGTON DC 20015

CONTENT :
SITE PLAN : TOP VIEW

OWNER :
HATCHER PROPERTY MANAGEMENT

5500 TO 5514
CONNECTICUT AVE NW
WASHINGTON DC 20015

DRAWN BY :
RS

REVISOR BY :

PROJECT:
ALLEY DOUBLE GATE

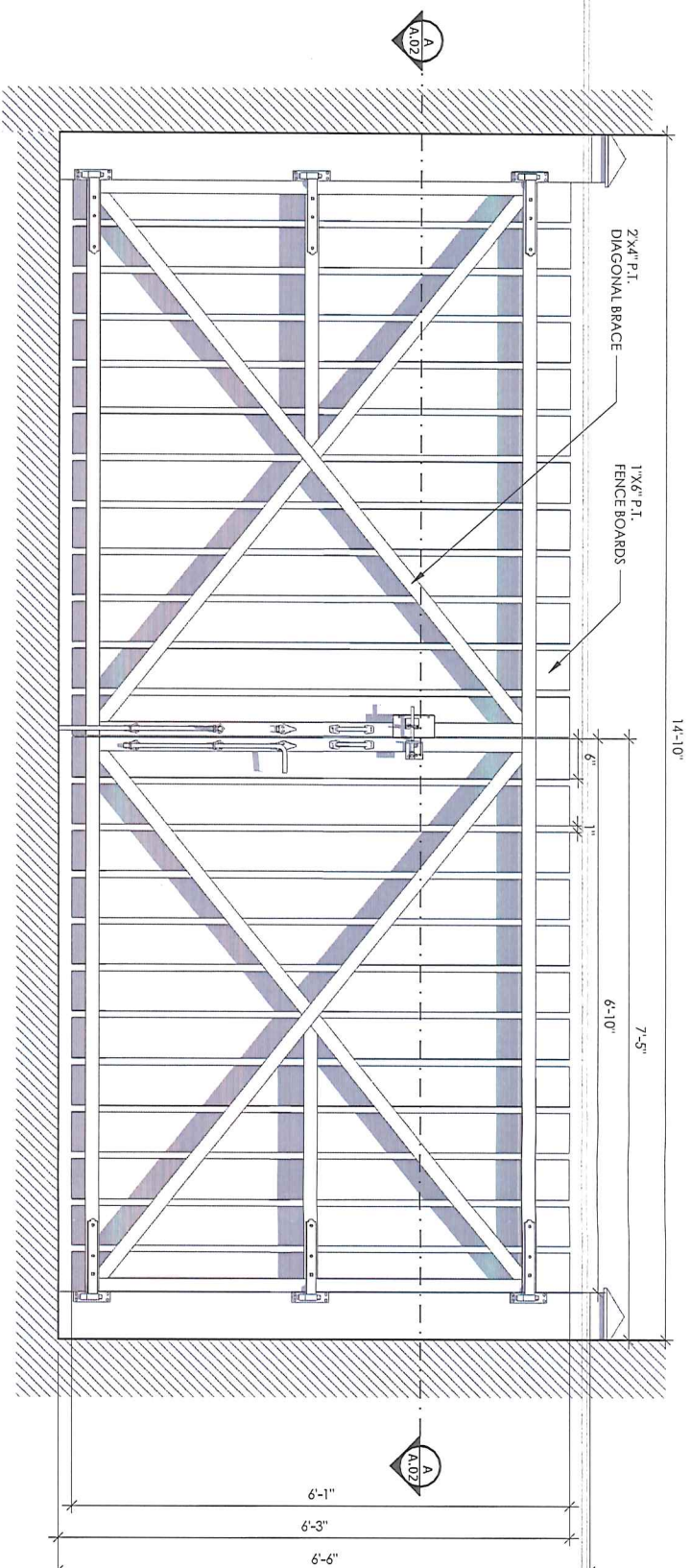
5500 TO 5514
CONNECTICUT AVE NW,
WASHINGTON DC 20015

DATE :
NOVEMBER 2022

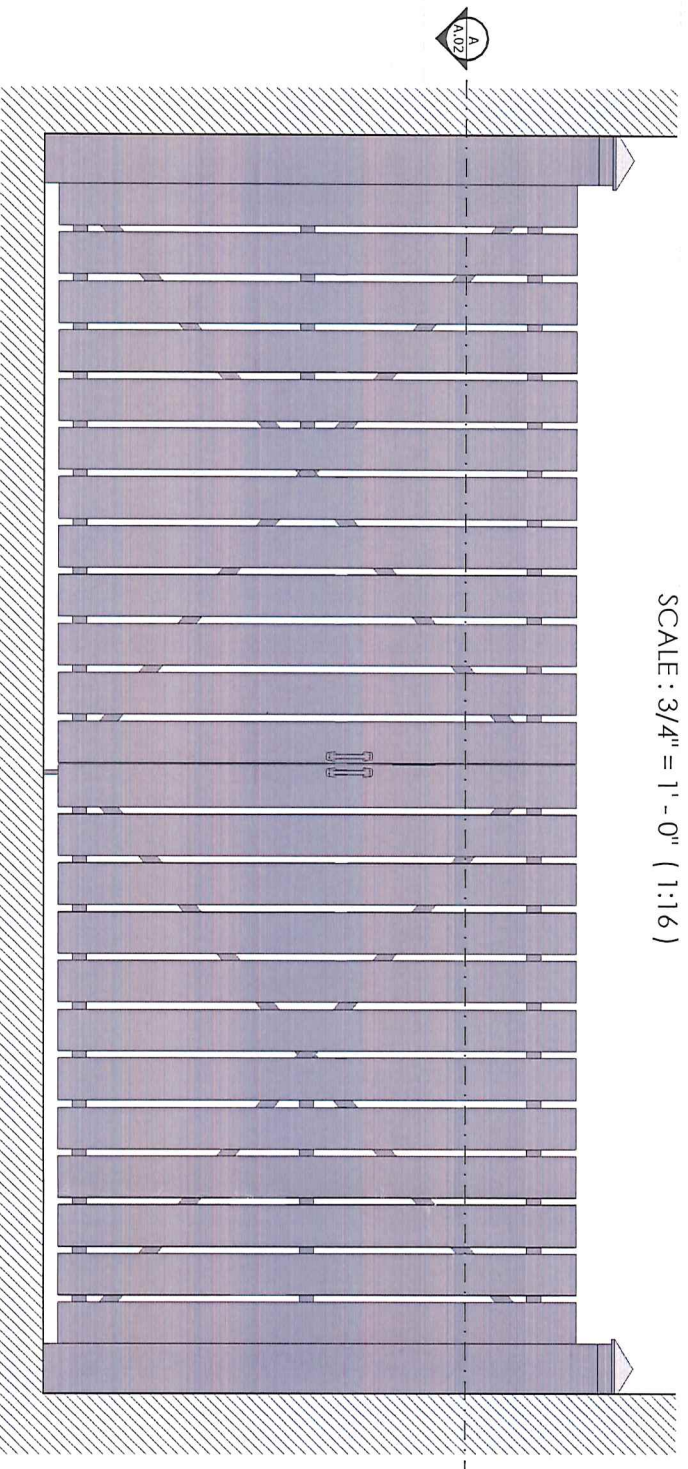
A.01

SHEET 02 OF 04

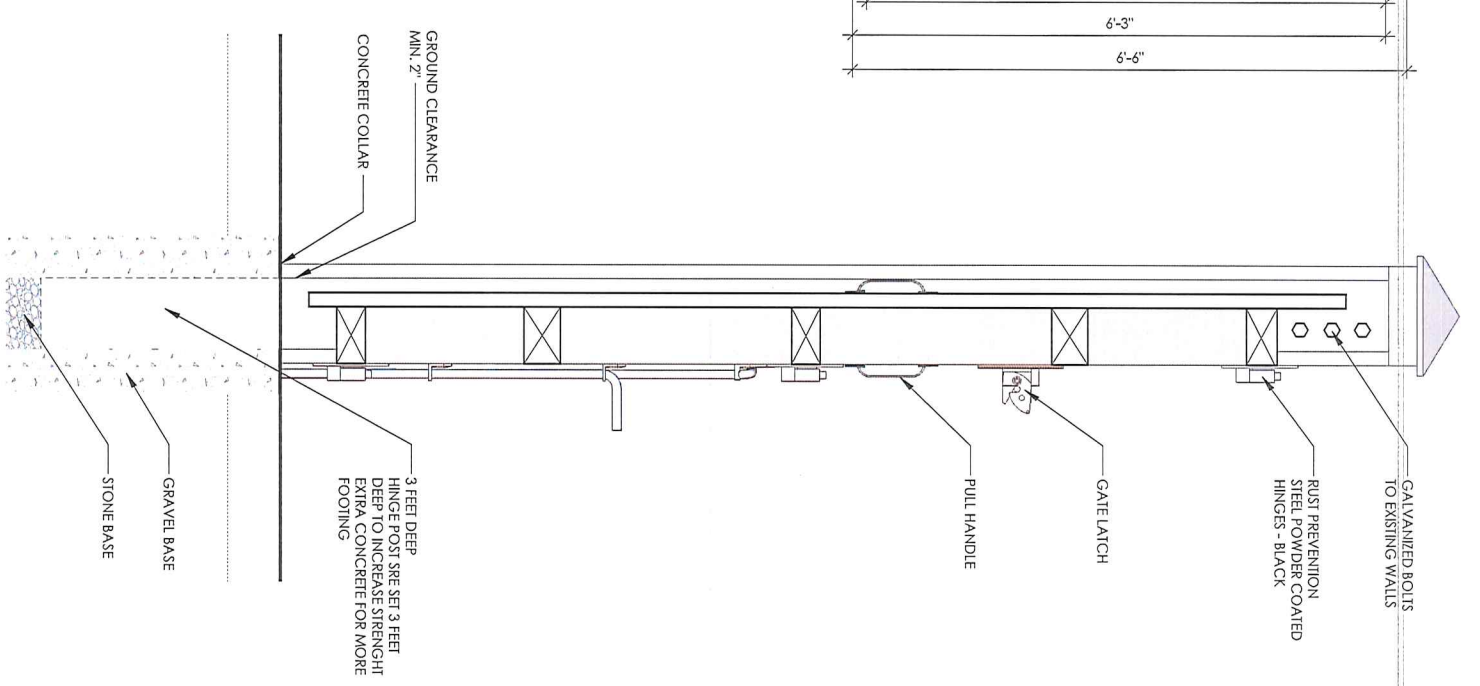
5500 TO 5514 CONNECTICUT AVE NW WASHINGTON DC 20015



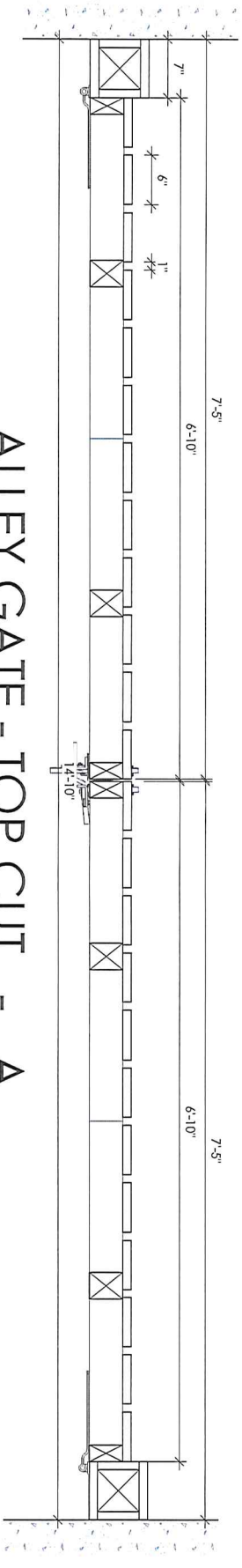
ALLEY GATE - REAR VIEW
SCALE : 3/4" = 1' - 0" (1:16)




ALLEY GATE - FRONT VIEW
SCALE : 3/4" = 1' - 0" (1:16)



ALLEY GATE - SIDE CUT
SCALE : 1 - 1/2" = 1' - 0" (1:8)



ALLEY GATE - TOP CUT - A
SCALE : 1 - 1/2" = 1' - 0" (1:8)

 BRANDES & CASSAGNOL ENGINEERS 5520 CONNECTICUT AVE. NW #414 WASHINGTON, DC 20015		BRANDES & CASSAGNOL ENGINEERS PIERRE CASSAGNOL BCE Structural Engineers 1 410 808 3513 pcassagnol@bcepc.com		5520 CONNECTICUT AVE. NW #414 WASHINGTON, DC 20015	
PROJECT LOCATION : 5500 TO 5514 CONNECTICUT AVE NW, WASHINGTON DC 20015			CONTENT : PATIO : FLOOR PLAN & DETAILS		
OWNER : HATCHER PROPERTY MANAGEMENT			5500 TO 5514 CONNECTICUT AVE NW WASHINGTON DC 20015		
DRAWN BY : RS			REVISED BY :		
PROJECT : ALLEY DOUBLE GATE			5500 TO 5514 CONNECTICUT AVE NW, WASHINGTON DC 20015		
DATE : NOVEMBER 2022			SHEET 03 OF 04		